



Nellim New Year Aurora Adventure



HOLIDAY TYPE: Small Group
VISITING: Finland

BROCHURE CODE: 1908
DURATION: 7 nights

In Brief

Welcoming in the New Year in this vast frozen playground is sure to be a wonderful experience for your family, creating memories that will last a lifetime. Keep watch for the Aurora by night whilst snowmobiling, husky sledding and snowshoeing by day, all the time taking in the scenic fells and forests of this remote and charming destination.

Our Opinion

“ Welcoming in the New Year in this remarkable setting is sure to be a much-treasured memory for you and your family. Nellim is one of the most remote wilderness locations that we offer with spectacular scenery of forested fells and frozen lakes as its backdrop. The atmosphere at this time of year is wonderful and the activities included provide an exceptional way to finish off one year and welcome in the next as you will explore the area extensively during both the day and night. Hopefully, the Northern Lights will add to the celebrations. ”

Dawn Kitson



What's included?

- **Flights:** return flights from London to Ivalo (either direct or via Helsinki). Flight routes subject to change.
- **Transfers:** return airport transfers
- **Accommodation:** 7 nights hotel accommodation in double/twin room. (**Please note:** the hotel can usually accommodate your bed set up preference but this can't be guaranteed. Upgrades available on request.)
- **Meals:** 7 breakfasts, 6 lunches, 7 dinners
- **The following activities are included:** Snowmobile safari, New Year's celebrations, cross-country skiing, husky safari, Northern Lights workshop, Aurora Camp, wilderness day, minibus/car Northern Lights hunt, snowshoeing and reindeer visit (**order subject to change**)
- Cold weather clothing for the duration of your stay
- Fully qualified wilderness guides and instructors
- 24/7 assistance from our UK based operations team and in destination support from our local partners

Trip Overview

Nellim is an incredible destination, which sits close to the shore of Lake Inari. It offers families the chance for adventure in this remote and genuinely unspoilt landscape of Lapland. This extra-special departure allows your family to see in the New Year together, in this incredible place, making memories to treasure.

The trip has been designed to suit families with children over the age of 8 years old (this does not preclude younger children but participation is at the guide's discretion) and is designed to make the most of the incredible Arctic landscape. Your days will be spent snowmobiling across frozen lakes, snowshoeing through the forests, dog sledding and so much more. All activities have been designed for families to enjoy together.

Nellim sits within prime Aurora territory and is a fantastic spot from which to seek out a potential Aurora. The minimal light pollution means that if the skies are cloud-free and the solar activity is high, then your chances of spotting the Aurora here are very good indeed. The hotel is just a short walk from Lake Inari's shoreline, and the views of the night sky from there are just perfect.

The hotel has become a firm favourite with our families over the years due to its welcoming atmosphere, hearty meals, cosy accommodation, and enthusiastic and friendly guides. These elements, together with the beautiful wilderness location and exciting activities, make for an unforgettable way to welcome in a New Year.

Please note that the order of activities within your itinerary is subject to change and the agenda below should be used as a guide only. The exact order of your agenda will be confirmed upon arrival at the hotel.

White outline Interreg Nord

Image credits: Markku Inkila, Anthony Oberlin, Claire Howarth, Ron Thompson (client)

Agenda

Please note the order of activities is subject to change

DAY
1

ARRIVAL

After arriving at Ivalo Airport, deep in the heart of Lapland, you will be transferred to Nellim in time to settle in to your room and enjoy dinner.* You'll need a good night's sleep tonight ahead of tomorrow's adventures and festivities but as with all nights at Nellim, if you have a moment we thoroughly recommend heading down to one of the two nearby lakes after dinner to search the skies for the Northern Lights.

Please note that the order of activities within your itinerary is subject to change and the agenda below should be used as a guide only. The exact order of your agenda will be confirmed upon arrival at the hotel.

* **Transfers** are based on a scheduled group shuttle that sometimes stops at a few nearby hotels. If you would prefer to upgrade to private taxi transfers please ask our Travel Experts for a quotation.

Included Meals: Dinner

DAY
2

SNOWMOBILE SAFARI

This morning you will get your first experience of your new surroundings during a day out in the wilderness with your guide. Snowmobiling is thrilling and is one of the most exciting ways to explore the Finnish wilderness, allowing you to cover a lot of ground and see a great deal more of the landscape. Adults will travel two per snowmobile (taking it in turns

to drive if both have a full driving licence and are 18 years or older) and children will be seated in a sledge pulled by the guide's snowmobile. The tour lasts around two hours in total and is an ideal way to explore to take in your new surroundings.

Included Meals: Breakfast, Lunch, Dinner

DAY
3

DAY IN THE WILDERNESS AND NORTHERN LIGHTS HUNT BY MINIBUS OR CAR

Today is all about getting to grips with some basic winter survival skills and you will enjoy activities such as fire building and igloo construction as well as ice fishing. Lunch will be cooked over an open fire. This is an ideal introduction to the outdoor lifestyle enjoyed in this part of the world and a real favourite with adults and children alike. In total, you will be out for approximately four hours.

Returning to the hotel this afternoon, you will have some time to relax before dinner. Later this evening, you will set off from the hotel in a minibus or car to travel to some of the best Northern Lights viewpoints in the area. Our guides will be armed with the latest weather and Aurora forecasts in order to optimise your chances of catching a display. One of the most successful spots is Paatsjoki Bridge, where you can look out at the flowing river below. You will be out for approximately three hours.

Included Meals: Breakfast, Lunch, Dinner

DAY
4

SNOWSHOEING, NORTHERN LIGHTS WORKSHOP AND AURORA CAMP

Snowshoes may not be quite as high octane as snowmobiles, but nevertheless, they are great fun! If you try and explore the forests without these shoes on your feet, is unlikely that you will get very far. With the snowshoes on you will follow your guide into the wilds to hopefully witness some of the local flora and fauna at close quarters. You will be out for approximately two hours. Snowshoes can be hired throughout your stay at Nellim so you can explore the area independently if you wish.

The group will then return to the hotel for free time and dinner, before receiving an informative Northern Lights presentation from a guide. This will provide an insight into both the science and legends of this natural phenomenon so you will be well equipped for your inaugural Northern Lights activity this evening.

Tonight it's time to wrap up warm before you head out to an Aurora Camp in a snowmobile-pulled sled. Here your guide will light a fire and serve hot berry juice while you keep watch for a potential Aurora. The camp will be a local Aurora hotspot which the guides have chosen for its unobstructed views of the northern skies. You will be out for approximately two and a half hours.

Included Meals: Breakfast, Lunch, Dinner

DAY
5CROSS-COUNTRY SKIING, HUSKY SAFARI AND NEW YEAR
CELEBRATIONS

Pretty much as soon as local children can walk, they are taught to cross-country ski. This sport is something of a national obsession and so today you will receive full instruction before taking to the trails. It can take a bit of getting used to but hopefully, you will soon be gliding along the trails like a local. You will be out for approximately two hours. Skis can be hired locally and maps provided by reception should you want to explore independently later in your holiday.

After a well-deserved lunch, the group will head to the kennels where you will be welcomed by the excited barks of the dogs, eagerly awaiting your arrival. It is time for your husky safari!

Following a full introduction and safety briefing, you will take to your sleds (two adults per sled) and set off on your safari (travelling for approximately 1.5 hours). Children will typically be tucked up warmly in a sled pulled by the guide's team of huskies. The route will vary depending on weather conditions but the experience of whizzing across frozen Lake Inari is sure to be a delight for all. There will be plenty of opportunities to take pictures with the animals before returning to the hotel to relax. You will be out for approximately 2 hours in total.

This evening you will take part in a New Year's Eve dinner at the hotel before heading down to the lake to see in the New Year in Finnish style. This is a lovely traditional event and people come from all over the village. With any luck, the Northern Lights will also make an appearance to round off the old year and welcome in the new.

Included Meals: Breakfast, Lunch, Dinner

DAY
6

REINDEER VISIT

A visit to Lapland would not be complete without the chance to meet some reindeer and is always a highlight with families. Today, as you get the chance to be up close with these gentle animals whilst also gaining an informative insight into the importance of reindeer herding.

During the visit, there will be the chance to feed and photograph them. You will be out for approximately two hours.

Included Meals: Breakfast, Lunch, Dinner

DAY
7

FREE DAY

Your final day in Lapland has been left free for you to create your own agenda. You may wish to relax and enjoy your peaceful surroundings for one last time, or perhaps take

advantage of the sauna or lounge area. If you are wishing to be a bit more active, you can hire snowshoes or cross-country skis or participate in some additional activities (please speak to one of our Travel Experts for further information).

Included Meals: Breakfast, Lunch, Dinner

DAY
8

DEPARTURE

After breakfast, it's time to say goodbye to take your transfer back to the airport for your return flights home.

Included Meals: Breakfast

Personalise this tour

Our pick



Spend the night in an Aurora Bubble

A wonderful addition to your family holiday, spending the night in an Aurora Bubble offers the chance for a unique and memorable night's sleep, as you lie back in bed and gaze directly up into the pitch-black Arctic sky.

Each Bubble consists of a wooden base, with a large north-facing dome window over the bed. There is also a small toilet too. They are heated and decked out with cosy furnishings, ensuring a warm night's sleep. Of course, you may not want to sleep much, choosing instead to keep a close watch on the sky!

The Aurora Bubbles are situated a short walk from the hotel amongst the trees. They have no running water but if you upgrade to spend the night in a Bubble then you will also keep your hotel room so facilities are within easy reach. Please note that the beds in the Bubbles are double beds so can only accommodate two people.

Whilst we can't guarantee the Northern Lights, this remains a genuinely memorable and fun experience for your family!

Image credit: Markku Inkila

Other options

ACTIVITIES



Aurora Snowshoeing

Heading out into the forest after dark is a real adventure. Snowshoes will prevent you from sinking deep into the snow, as you will follow in your guide's footsteps.

The wilderness at night is an incredible place and when you reach the perfect viewpoint you will enjoy a warming drink as you watch the skies.

Seeing the Aurora dance across the sky is an unforgettable sight and if you are lucky enough to see them as a family tonight, you'll never forget the experience.

Duration: approximately 2.5 hrs in total

©Markku Inkila

SPECIAL NIGHTS



Sleep in an Aurora Kota

Nellim is renowned as an Aurora viewing destination and so the hotel has created a selection of Aurora Kotas for guests to enjoy.

These part-cabin and part-glass tepee buildings are self-contained and situated a short distance from the hotel. The idea is that you can hopefully watch the Northern Lights from the comfort of the bed.

The Kotas are all 25m² with their own private

sauna, double bed and en-suite bathroom. There is also room for two extra beds for children.

Please note: prices are based on you spending the first or last night of your holiday in this unique accommodation and not keeping your original accommodation. If you would like to do this on any other night during your holiday you will need to keep your accommodation and supplements will apply. Please contact our Travel Experts for a quotation.

Image credit: Anthony Oberlin

Included Accommodation

Other options are available - see below for details.

Wilderness Hotel Nellim (Nights: 1-7)



The rather lovely Wilderness Hotel Nellim is a small family-run hotel, owned and run by Jouko and Mari Lappalainen and their family.

The building was once a village school but has been wonderfully restored and decorated in a warm and welcoming style to offer a laid-back and inviting atmosphere for visiting families.

The hotel has three main accommodation buildings surrounding a central courtyard. In the main building, you will find the majority of the rooms, the bar and restaurant, sauna and cosy lounge area. The two additional buildings are only around 50m from the main building and contain apartments and more hotel rooms.

Hotel facilities

- The focal point of the main building is the restaurant area which offers a cosy dining area and a bar with seating for up to 120 people. Your meals here will be

served buffet-style and the food is hearty and wholesome with both traditional Finnish and international food to enjoy

- There are tea and coffee facilities available in the restaurant for guests to access during their stay and if you are situated in one of the buildings outside the main one there are tea and coffee stations available too (a small fee applies)
- Free Wi-Fi is available in the main hotel reception area
- There is one sauna for guest use, which you can book per room for private hire

Room types

Double or twin rooms: The hotel has 34 rooms in total which can be made up as either a double or a twin. These are all decorated in traditional Finnish décor and offer a warm and comfortable base. All are en-suite with shower room and hairdryer.

Please note: the hotel can usually accommodate your bed set up preference but this can't be guaranteed. Upgrades available on request.

Other accommodation options

Contact us for a personalised quote.

Wilderness Hotel Nellim - Arctic Suites



During your stay at Nellim, a popular option for families is to upgrade to one of the cosy and comfortable Arctic Suites. Situated in one of the annexe buildings they are across a small courtyard from the main building and restaurant. The Arctic Suites are a great option if you have a larger family or would like additional room and space to relax in after a day's Arctic adventures.

The suites vary in size and in the facilities that they offer and are booked on a first-come, first-served basis according to the needs of your party.

Arctic Suite facilities

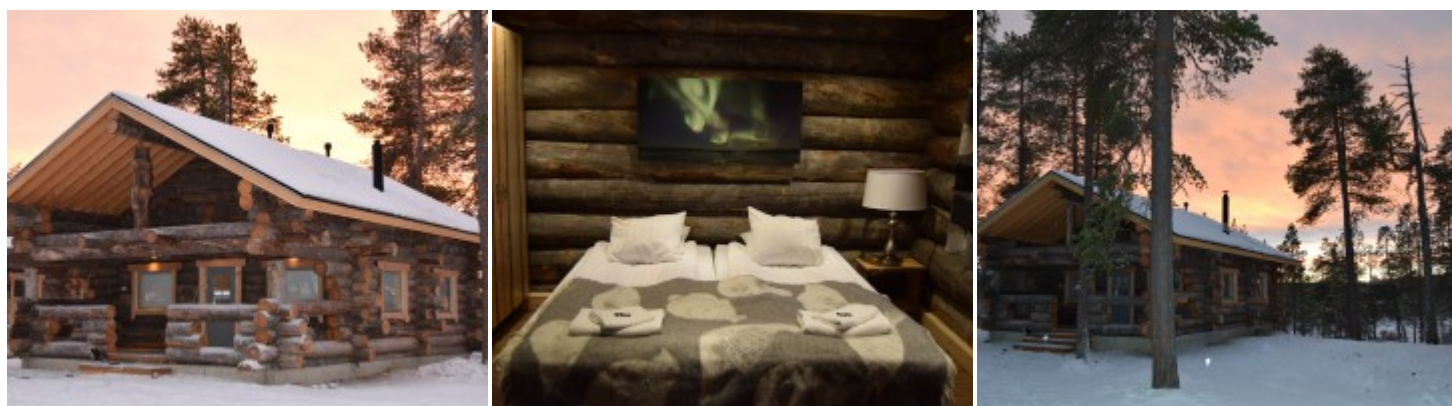
- There are one or two-bedroom options available which are equipped with living area, bathroom (with shower and hairdryer), small kitchenette and/or electric kettle and TV. We would recommend taking a supply of your preferred tea and coffee to provide hot drinks during your stay
- Some of the suites have a private sauna. We can request these particular facilities for your family but can't guarantee them
- Families staying in the suites will enjoy their meals in the main restaurant, a short walk away

Supplements and minimum numbers may apply: please speak to one of our Travel Experts for a quotation

These images display a range of the different types of suites.

Please note: the hotel can usually accommodate your bed set up preference but this can't be guaranteed. Upgrades available on request

Wilderness Hotel Nellim - Cabins



Nellim offers a variety of cabins which offer varying facilities and which are mainly within easy walking distance of the hotel. Cabins are allocated on a first come, first served basis, according to the accommodation which most suits your party and availability. Specific facilities cannot be guaranteed. Our travel experts will be able to recommend the most suitable option for your family. Please note that the cabins are subject to supplement and are available on request only.

Cabin facilities

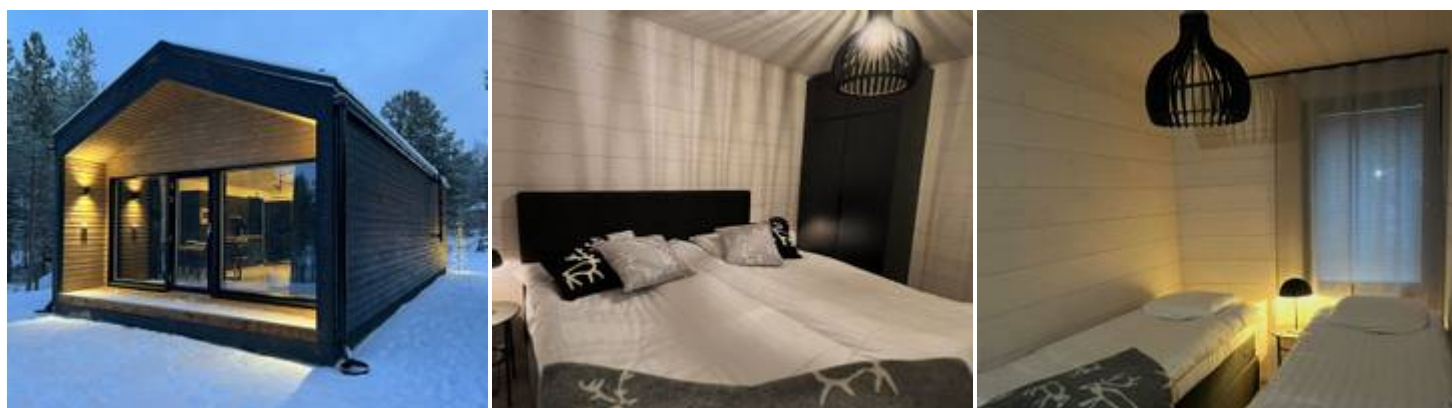
- The cabins sleep between 4 – 6 people and are configured in a variety of ways. Some feature mezzanine sleeping areas and others are single-floor and open plan with a double bed and sofa bed option
- The standard cosy cabins are studio in style and offer a double bed, pull-out sofa bed, a small kitchenette (with kettle and coffee maker – so you may want to take your favourite hot drinks), a shower room (with hair dryer), an en-suite toilet, a fireplace and a private sauna
- A large lakeside cabin can be requested for larger groups, but this is a few kilometres from the hotel and so transfers are provided for meals and activities
- Two larger log cabins situated close to the hotel are available on request, however, these require a minimum of 4 people and sleep up to 8

Supplements apply: please speak to one of our Travel Experts for a quotation

These images display a range of the different types of cabins.

Please note: the hotel can usually accommodate your bed set up preference but this can't be guaranteed. Upgrades available on request

Wilderness Hotel Nellim - Arctic Lake Villa



Brand new for the 2022/23 season are the Arctic Lake Villas. Within walking distance of the main building, approximately 50 meters, at the Wilderness Hotel Nellim, this location offers a great view of Lake Inari and the best possibility of observing the Northern Lights in the evening.

Villa facilities

- Two bedrooms, one with a double bed and the other with twin beds
- Villas has own kitchenette, living room area and bathroom
- Each Villa has its own private sauna to enjoy at your leisure
- All meals will be served in the hotel restaurant which is just a short walk from the

villa

Supplements apply: please speak to one of our Travel Experts for a quotation

Please note: the hotel can usually accommodate your bed set up preference but this can't be guaranteed. Upgrades available on request.

Wilderness Hotel Nellim – Log Suite upgrade



Located between 30 – 70 metres from the main building these log suites are designed to be the highest standard of accommodation Nellim offer. The suites are approximately 33m² allowing plenty of space for families to relax in comfort. They are ideal for larger families or for those looking to have a bit more space during their stay.

There are four suites in each of the separate log buildings offering families a high level of comfort during their stay at Nellim.

Suite facilities

- All suites have their own private sauna, electric kettle and mini-fridge to make your stay as comfortable as possible
- The suites have a double bed downstairs as part of the open plan layout and a mezzanine level above which sleeps up to three more people
- All meals will be served in the hotel restaurant which is just a short walk from the suites

Supplements apply: please speak to one of our Travel Experts for a quotation.

Please note: the hotel can usually accommodate your bed set up preference but this can't be guaranteed. Upgrades available on request.

The Specifics

Holiday group size (approximate)

This holiday requires a minimum of 4 people to run, however, we require a minimum of 8 people for our flight allocation. Maximum 28 people (approximately). Please speak to our Travel Experts for further information.

Group Size

We always try to provide an approximation of the group size you can expect to be with for the duration of each of our holidays. It may be that you are joined by others for parts of your holiday (such as transfers and particular activities) but the above number reflects those you can normally expect to be with from beginning to end. If group size is something which is particularly important to you, please speak to our Travel Experts and they can suggest the best holidays for you.

Tailor-made holiday group sizes will vary for all activities as will the group size for any additional activities you book.

Minimum numbers required for a holiday to operate

Some of our holidays require a minimum number of participants to operate (as listed in the 'Group Size' section). If your holiday departure has not yet reached the minimum number, you will be told at the time of booking. In the unlikely event that your chosen date is not guaranteed by nine weeks before your scheduled departure date, we will contact you to discuss the available options as per our booking conditions.

Minimum and maximum age

The minimum age for this holiday can be found in the 'Key Facts' section of the holiday overview.

Younger family members may be able to participate but may not be able to take part in all activities. Please contact one of our Travel Experts if you have any questions.

Itinerary amendments

The order of activities listed in this agenda is provided for guidance only, your final and detailed itinerary will be provided either with your final travel documents (which are uploaded into your online account around a week prior to departure) or upon arrival.

Specific Payment and Cancellation Terms for Nellim

Please note that the following cancellation terms supersede in part those mentioned in Section 7 of our general booking terms and conditions.

If you are travelling between, and including, the dates of 13.12-06.01, the following cancellation terms apply:

- Prior to 10.09 - Loss of deposit (including the full cost of the flights or other services where paid at the time of booking)
- 11.09 up until departure date - 100%

For all other travel dates, the following cancellation terms apply:

- Up to balance due date (this is normally 16 weeks prior to departure however some holidays differ. If this applies to your holiday you will be advised at the time of booking) - Loss of deposit (including the full cost of flights or other services where paid at the time of booking)
- Between balance due date and 33 days prior to departure - 60%
- 31 or less days - 100%

Terms and Conditions

Our full booking terms and conditions can be found on our website: <https://www.activitiesabroad.com/booking-conditions>

Please note: our payment and cancellation terms will be unique to each booking - they will be confirmed with you at the time of quotation. The terms listed above are noted as a guide only