



## Northern Lights Village Pyhä - Pick and Mix



**HOLIDAY TYPE:** Pick and Mix  
**VISITING:** Finland

**BROCHURE CODE:** 1166  
**DURATION:** 3 or more nights

### In Brief

Be one of the first families to make unforgettable memories in the Northern Lights Village's newest resort, Pyhä. Our pick-and-mix holiday lets you design your ultimate escape. Always dreamed of driving a snowmobile? Our expert guides will teach you how. Want to tick marvelling the Northern Lights off your bucket list? We have the expertise to maximise your chances. Are your children animal-mad? We have unique husky and reindeer experiences waiting for you.

### Our Opinion

*“ Having taken my family to the other Northern Lights Villages in previous years I was so excited to try Pyhä. The activities, food and service at each destination are always fantastic - the hardest choice was deciding which accommodation type to book this time! My whole family is counting down the days to try out this awesome new destination. ”*

Amy Hope



## What's included?

- **Flights:** return flights from London to Rovaniemi (either direct or via Helsinki depending on departure dates). Flight routes subject to change
- **Transfers:** return grouped shared airport bus transfers\*
- **Accommodation:** a minimum of 3 nights in a Taiga Forest Cabin (but you can stay for as long as you wish. Extra night costs are listed in the 'Dates & Prices' section)
- **Meals:** Half Board (breakfast and dinner)
- Aurora alert service which you can set to alert you throughout the night or mute at any time
- Cold-weather clothing is provided for the duration of your stay
- Fully qualified guides and instructors during activities
- 24/7 assistance from our UK-based operations team and in-destination support from our local partners

\* Please note that the transfers included are shared and grouped together to meet similar flight arrival times.

### TAILOR YOUR TRIP

A selection of winter activities can be added to your trip at an additional cost. Once you have chosen when you want to travel and for how long (we recommend a minimum stay of three nights) you can select as many or as few activities as you wish from the extensive range on the '[Activities](#)' tab and tailor your trip as required. All activities are individually priced and our Travel Experts can assist you with your selection and will then provide a personalised itinerary quotation for you.

## Trip Overview

Pyhä is the perfect destination for families seeking adventure, exceptional activities, and impeccable service. Markku Inkilä and his wife, Susanna, are renowned for their supreme Lapland offerings. They've taken their wealth of experience to create another wonderful and authentic retreat for guests both young and young at heart.

Imagine snuggling up at bedtime in the comfort and warmth of a glass-roofed accommodation whilst you wonder at the magic of the Northern Lights dancing across the

starry night sky. If you're looking for an immersive, close-up experience for you and your family, you've found it.

Once you arrive at Pyhä, you'll be greeted with a warm welcome. You have the freedom and flexibility to design the rest of your time by exploring our extensive list of activities for the whole family to enjoy. Highlights include a very special search for Father Christmas – an encounter like no other. Speak to one of our dedicated and knowledgeable Travel Experts who will be happy to help you create your ultimate holiday.

## Agenda

Please note the order of activities is subject to change

DAY  
1

FLIGHTS, ARRIVALS AND WELCOME

**Included Meals:** None

## Personalise this tour

### Our pick



## Aurora Hunting in the Wilderness

### Aurora Hunting in the Wilderness

Step on board a minibus to a remote camp and get ready for a magical evening. Snuggle up together around the warming fire in a cozy hut with a delicious hot drink and a snack. Look up to the starry scene above and await the Northern Lights. Hopefully you'll see them twist and twirl across the night sky.

**Duration:** approximately 3 hours in total

**Minimum age:** 4 years and over

# Other options

## ACTIVITIES



## Aurora Hunting by Snowmobile

### Aurora Hunting by Snowmobile

Experience the exhilaration of snowmobiles in this thrilling quest through the nocturnal snow-covered forest and up the slopes of the glistening white fells. You will travel two adults per snowmobile and your guide will make a fire and comforting refreshments en-route. With minimal light-pollution, you and your family be in the best

position to capture the Northern Lights as they dance across the starry sky.

**Please note:** the driver of a snowmobile must be at least 18 years old and hold a valid driving licence. As a general rule, children (14 years and under) will travel in a sled pulled by the guide's snowmobile. Children 4 years and under must be accompanied in the sleigh by one parent. Older children (15 years and over) may be able to travel as pillion on the snowmobile, but this is at the discretion of the guide and the child must be at least 140 cm tall. Children will pay the adult price if riding on the snowmobile.

**Duration:** approximately 3 hours in total

**Minimum age:** 4 years and over





## Aurora Hunting by Heated Sleigh

### Aurora Hunting by Heated Sleigh

Settle into a seat in the cosy heated sleigh as you glide through the breathtaking landscape. Your friendly guide will take you through the snow-capped forest and over the boundless wilderness. Once you reach your destination, your guide will build a fire and you can listen to Nordic tales whilst enjoying hot drinks. With a little bit of luck, the

Northern Lights will appear on the horizon and perform a dazzling display. Prepare to capture this phenomenon on camera or savour the experience in the moment.

**Duration:** approximately 3 hours in total

**Minimum age:** 4 years and over



## Aurora Snowshoeing

### Aurora Snowshoeing

Have fun on a walk with your knowledgeable guide through the calm forest and up a small hill at night. Hear the crunch of freshly fallen snow beneath your snowshoes. Warm up in the cozy hut by the fire with hot drinks and some snacks. Your guide will share fascinating tales of the Northern Lights while eagerly awaiting the mesmerising display. Hopefully, you will have the chance to see their gorgeous patterns and vibrant colours before

heading back to your accommodation.

**Duration:** approximately 2 hours in total

**Minimum age:** 4 years and over



## Aurora Photography Workshop

### Aurora Photography Workshop

Why not take a photography class together? Suitable for all abilities and ages, you and your family can learn invaluable tips and techniques from a seasoned photography instructor in this fascinating photography workshop. It's an interactive session and you'll leave feeling equipped and confident to capture the Northern

Lights in all their glory. Ensure your memories of this special holiday last forever by composing advanced photographs during your trip.

**Please note:** you will need to bring your own equipment (camera, ideally SLR, and tripod)

**Duration:** approximately 1 hour in total

**Minimum age:** 4 years and over



## 2hr Snowmobile Safari

### 2hr Snowmobile Safari

A must-do Arctic activity, snowmobiling is on most winter bucket-lists and what better way to experience the thrill in the hands of your expert guide? They'll give you a briefing and safety talk before heading out two people per snowmobile onto the snowy landscape. You stop along the way to take photos of you and your family and enjoy a hot drink by the fire. A great taster activity for first timers.

**Please note:** the driver of a snowmobile must be at least 18 years old and hold a valid driving licence. As a general rule, children (14 years and under) will travel in a sled pulled by the guide's snowmobile. Children 4 years and under must be accompanied in the sleigh by one parent. Older children (15 years and over) may be able to travel as pillion on the snowmobile, but this is at the discretion of the guide and the child must be at least 140 cm tall. Children will pay the adult price if riding on the snowmobile.

**Duration:** approximately 2 hours in total

**Minimum age:** 4 years and over



## 4hr Snowmobile Safari

### 4hr Snowmobile Safari

Get ready for an incredible Arctic adventure through undulating forest paths and the winding hills of Pyhänturi National Park. Your expert guide will stop at vantage viewpoints to give you the chance to capture some unbelievable family photos against the breathtaking backdrop. This thrilling activity includes a soup lunch and will last for around four hours in total.

**Please note:** the driver of a snowmobile must be at least 18 years old and hold a valid driving licence. As a general rule, children (14 years and under) will travel in a sled pulled by the guide's snowmobile. Children 4 years and under must be accompanied in the sleigh by one parent. Older children (15 years and over) may be able to travel as pillion on the snowmobile, but this is at the discretion of the guide and the child must be at least 140 cm tall. Children will pay the adult price if riding on the snowmobile.

**Duration:** approximately 4 hours in total

**Minimum age:** 4 years and over



## Kid's Snowmobiling

### Kid's Snowmobiling

Make your child's holiday unforgettable with this unique, once-in a lifetime experience. They'll find the activity both enriching and exhilarating and remember it for years to come. A 200-metre track offers a safe environment for children to drive their own snowmobile, that have been specially built for children.

**Please note:** Parents must supervise this activity and are responsible to ensure their child is following the guide's instructions safely. There is no age restriction, but children must be 100cm tall or above. Parents must assess whether this activity is suitable for their child's age.

Choose from a 30-minute or 60-minute session.

### Prices:

30 minutes from £33 per child

60 minutes from £66 per child



## Reindeer Sledge Ride

### Reindeer Sledge Ride

Before snowmobiles, Laplanders would travel by sleigh pulled by reindeers. Get cosy and hold on tight as you travel two to four people per sled! Nothing epitomises Lapland like these magnificent creates and what a unique experience to get up close whilst taking in the enchanting wilderness. The reindeer ride starts from and end in the reindeer paddock in the Northern Lights Village.

**Duration:** approximately 25 minutes in total

**Minimum age:** 4 years and over





## Meet the reindeer

### Meet the reindeer

If 25 minutes isn't enough, be sure to book this extended activity which gives you and your family the chance to feed the reindeer and practice throwing a lasso. After a short transfer to the Kopara Reindeer Farm, you'll hear all about the Sámi people and the intriguing history of reindeer herding.

The glittering forest then beckons you to enjoy a 1-hour reindeer sleigh ride (two to four people per sled) through its winding trails and unbeatable scenery before you indulge in a hearty and delicious lunch.

**Duration:** approximately 2.5 hours in total including lunch and transfers; sleigh ride lasts approx. 1 hour

**Minimum age:** 4 years and over

## Husky Safari



### Husky Safari

Have you ever wondered what it's like to be a musher? After a short transfer, you and your family will be greeted with pure joy and excitement by your team of huskies. They adore bounding over the Nordic terrain and showcasing their homeland.

You will usually travel two per sled (one driving and one as a passenger in the sled)

**5 km:** £105 per adult, £53 per child.

The total duration incl. briefing and a short transfer is approximately 1 hr. We expect you to be out on the husky sledge for around 30 minutes.

**10 km:** £140 per adult, £70 per child.

The total duration incl. briefing and short transfer is approximately 2 hrs. We expect you to be out on the husky sledge for around 1 hour.

**Minimum age:** 4 years and over



# Searching for Father Christmas

## Searching for Father Christmas

A trip to Lapland wouldn't be complete without an encounter with Father Christmas himself. Searching for the man in red will provide all your family with heartwarming memories to last a lifetime.

You'll be greeted by one of Santa's jolly Elves as they guide you through a series of magical experiences beginning with a gingerbread baking session. The Elves will help you create the most delicious cookies in their cosy hut before leading you to meet Santa's captivating reindeer. Next, you'll enjoy a short reindeer sleigh ride (approximately 10 minutes) through the winding, snowy forest. The Elves will take you on a quest via a snowmobile pulled sleigh to search for Father Christmas' hidden cabin through the enchanting woods. If you're successful, your family will be warmly welcomed by Santa and invited to join him for an intimate private experience (approximately 10 minutes). Here, you will be presented with a symbolic gift; the perfect souvenir to treasure from your remarkable holiday.

NB: Children can write a letter to Father Christmas in advance and it can be given to the reception team at check-in so that he will already have their letter when they arrive for their meeting.

**Duration:** approximately 3 hours in total

**Minimum age:** 4 years and over



## Cross-country Skiing School

### Cross-country Skiing School

From children to grandparents, you will see almost all Finnish people cross-country skiing and this activity gives your family the chance to try it out. It's a pursuit suitable for all ages and abilities. Your expert guide will teach you all the skills needed before you glide through the snow like a true Laplander.

**Duration:** approximately 2 hours in total

**Minimum age:** 4 years and over



## Snowshoeing and Ice Fishing

### Snowshoeing and Ice Fishing

Grab your snowshoes and your sense of adventure and head out into the shimmering forest to a nearby fell. You and your family will trek through the woodland and your guide will build a fire. Enjoy a hot drink while looking out for Siberian jay, a willow grouse, or a herd of reindeer roaming by. You'll then continue your trail over a frozen lake.

Here, your guide will teach you about the local wildlife and help you to drill a hole through the thick ice. You'll bait the hook and wait to see who can successfully catch the fish of the day. A great opportunity for some healthy family competition and a chance to experience another unique activity.

**Duration:** approximately 3 hours in total

**Minimum age:** 4 years and over

## Included Accommodation

Other options are available - see below for details.

Pyhä Northern Lights Village - Taiga Forest Cabin (Nights: 1-3)



One of our very favourite partners, Northern Lights Village launched their brand-new destination in Pyhä in 2023. We have been privileged enough to watch this awesome team create two of our most popular destinations from the initial concept stage right through to the professional operation to which we send hundreds of happy guests each month during the Autumn and Winter seasons.

The small village of Pyhä is around 130km North of the Arctic Circle and around 90 minutes from Rovaniemi airport. The Northern Lights Village is located about 5km from the nearby downhill ski resort. The village is set in a beautiful, picturesque snowy forest and just a very short walk away you can find the frozen Lake Pyhäjärvi.

## Facilities

There is a restaurant and reception building on site where all your meals will be served. At a safari house you will be issued cold weather clothing, and this is the meeting point for your activities. Please note that hot water is limited in all the accommodation types.

There will be four types of accommodation when this new destination opens in 2023.

- Just a short walk from your accommodation, you'll find the resort's brand-new restaurant serving up mouth-watering local flavours and special delicacies from Lapland and the Barents Sea regions. With a continental-buffet style breakfast, there's something for everyone. From nutritious fresh fruit, muesli and yoghurt to sweet treats like pancakes, Karelian pastries and croissants. Lunch and dinner are equally as delicious and varied and there's plenty of options for those with dietary requirements. Enjoy quality family time around the table surrounded by stylish interiors and luxury furnishings.
- Your friendly guides will be ready to welcome you at the meeting point for all activities in the reception of the main building. Throughout the programme, your guide will also take photos of your family; a special touch offered by the Northern Lights Village to ensure these precious moments are captured forever. Copies of your photographs can be purchased from reception.
- The small village centre is located nearby if you need to purchase any extra items and there's a ski resort located 5km away. If you and your family are feeling particularly active and want to take to the slopes, the team on reception will be more than happy to organise a transfer for you.
- To alleviate packing and ensure each family member is properly kitted out for the



duration of your stay, there is an onsite clothing storage providing cold weather clothing which can be collected after checking in at reception.

- For an extra charge (booked privately) you can relax in the sauna and hot tub after your day exploring the Arctic. If you're feeling especially brave, there's also the Ice Pool for you to plunge into.

## Taiga Forest Cabin

These two-bedroom idyllic log cabins are nestled amongst the snowy forest. They are ideal for larger families and offer 2 bedrooms and space for 2 more guests to sleep in the lounge area on a sofa bed. There will be 10 in total.

These spacious suites are 60m<sup>2</sup> and have their own private sauna and electric fireplace. There are fewer places we can imagine being cosier to return to after one of the exciting activities available during your stay.

These cabins effortlessly combine traditional Finnish construction with stylish and modern Scandinavian style. Just steps outside the front door and you can breathe in the crisp forest air and enjoy the peace and tranquillity which is so hard to find in modern life.

Look no further for the epitome of the cosy cabin to be your base for your once-in-a-lifetime holiday to Lapland.

(Please note: The image chosen is to give an indication of the type of cabin. The finished renovation may vary). Image credit: Marijke Jansen-Peper

---

## Other accommodation options

Contact us for a personalised quote.

## Pyhä Northern Lights Village - Aurora Cabin



The tried, tested and eternally popular Aurora Cabins feature here as at all Northern Lights

## Villages.

Each of the 15 cabins is 29m<sup>2</sup> and has a double or twin bed under the heated glass ceiling. Some of the cabins also have a sofa bed which allows up to 4 guests in each cabin (we would recommend a maximum of 3 adults – 4 adults would be very cosy!)

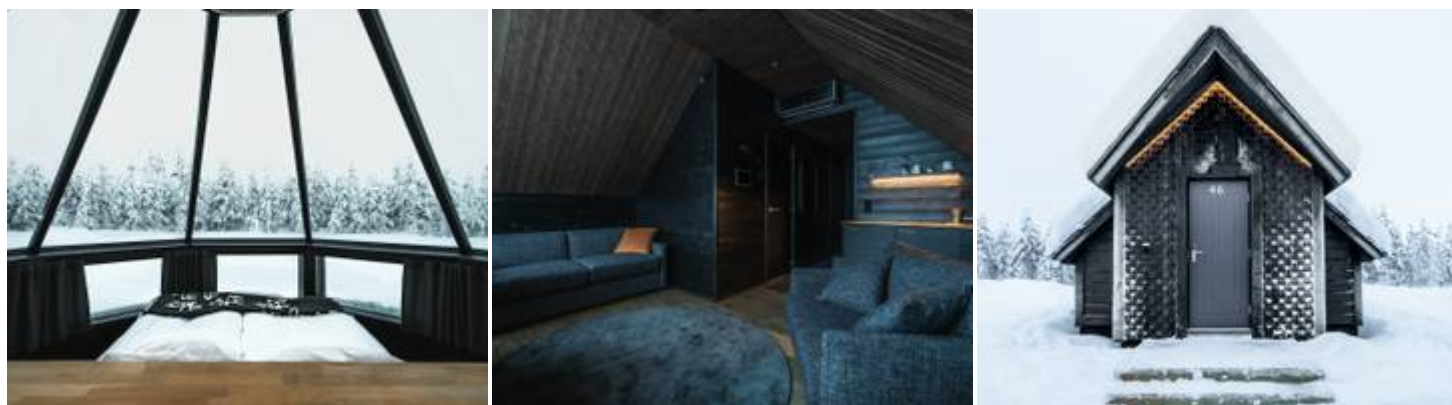
The Aurora cabins have an en-suite toilet and shower room. They have tea and coffee making facilities and a hairdryer.

Cabins are not cleaned between arrival and departure unless requested from reception. Additionally, towels can be exchanged at reception if required.

---

**Image Credit: Northern Lights Village**

## Pyhä Northern Lights Village - Aurora Suites



There will be 10 Aurora Suites hidden amongst the snowy forest scenery in Pyhä. These suites are more spacious at 44m<sup>2</sup> and sleep a maximum of 5 people (we would recommend a maximum of 4 adults – 5 adults would be very cosy!). They are being newly built for the Northern Lights Village's grand opening in December 2023. They will have the iconic glass roof to allow you to (hopefully) lie in bed and enjoy the Aurora dancing overhead.

Complementing the celestial magic, the Aurora Suites provide abundant space and comfort, making them perfect for families seeking an extraordinary getaway. Accommodating up to 5 people and featuring a private sauna, these suites blend luxury and practicality

## Pyhä Northern Lights Village - Sky View Suites



These are an exciting and innovative new room type for Northern Lights Village Pyhä. Their distinctive design sets them apart from traditional accommodation.

There are 10 in total and at 35 m<sup>2</sup> they are more spacious than the Aurora Cabins. They have a large, panoramic sloped glass roof looking to the Northern sky which is also heated to melt any snowfall, as well as an electric fireplace.

There is a double or twin bed situated under the glass windows and a sofa bed for 2 additional people. The suites also have a kitchenette and dining table, although all meals are served in the hotel restaurant. They have an en-suite bathroom with shower.

## The Specifics

### Holiday group size (approximate)

This holiday requires a minimum of 2 people to run, however, on some dates we require a minimum of 10 people for our flight allocation. Maximum 30 people (approximately). Please speak to our Travel Experts for further information.

### Group Size

We always try to provide an approximation of the group size you can expect to be with for the duration of each of our holidays. It may be that you are joined by others for parts of your holiday (such as transfers and particular activities) but the above number reflects those you can normally expect to be with from beginning to end. If group size is something which is particularly important to you, please speak to our Travel Experts and they can suggest the best holidays for you.

Tailor-made holiday group sizes will vary for all activities as will the group size for any additional activities you book.

### Minimum numbers required for a holiday to

## operate

Some of our holidays require a minimum number of participants to operate (as listed in the 'Group Size' section). If your holiday departure has not yet reached the minimum number, you will be told at the time of booking. In the unlikely event that your chosen date is not guaranteed by nine weeks before your scheduled departure date, we will contact you to discuss the available options as per our booking conditions.

## Minimum and maximum age

The minimum age for this holiday can be found in the 'Key Facts' section of the holiday overview.

Younger family members may be able to participate but may not be able to take part in all activities. Please contact one of our Travel Experts if you have any questions.

## Itinerary amendments

The order of activities listed in this agenda is provided for guidance only, your final and detailed itinerary will be provided either with your final travel documents (which are uploaded into your online account around a week prior to departure) or upon arrival.

## Specific Payment and Cancellation Terms - Northern Lights Villages

**Please note that the following cancellation terms supersede in part those mentioned in Section 7 of our general booking terms and conditions.**

- Up to balance due date (This is normally 12 weeks prior to departure however some holidays differ. If this applies to your holiday you will be advised at the time of booking) - Loss of deposit (including the full cost of flights or other services where paid at the time of booking)
- between balance due date and 43 days prior to departure - 50%
- 42 to 16 days prior to departure - 80%
- 15 or less days - 100%

## Terms and Conditions



Our full booking terms and conditions can be found on our website: <https://www.activitiesabroad.com/booking-conditions>

**Please note: our payment and cancellation terms will be unique to each booking - they will be confirmed with you at the time of quotation. The terms listed above are noted as a guide only**